

CIAO MAINE

♩=152

HENRY HIPKENS

Chord diagrams for measures 1-6:

- Measure 1: E-7(b9)
- Measure 2: A7(b9)
- Measure 3: D-
- Measure 4: G-6
- Measure 5: E-7(b9)
- Measure 6: A7(b9)

Chord diagrams for measures 7-12:

- Measure 7: D-
- Measure 8: A7
- Measure 9: D-
- Measure 10: D-(+7)
- Measure 11: D-7
- Measure 12: D-6

Chord diagrams for measures 13-18:

- Measure 13: G-
- Measure 14: G-(+7)
- Measure 15: G-7
- Measure 16: G-6
- Measure 17: E-7(b9)
- Measure 18: A7(b9)

Chord diagrams for measures 19-24:

- Measure 19: D-
- Measure 20: G-6
- Measure 21: E-7(b9)
- Measure 22: A7(b9)
- Measure 23: D-
- Measure 24: A7

Chord diagrams for measures 25-30:

- Measure 25: D-
- Measure 26: G-
- Measure 27: C7(b9)

Chord diagrams for measures 31-36:

- Measure 31: F
- Measure 32: E-7(b9)
- Measure 33: A7(b9)
- Measure 34: D-
- Measure 35: B-7(b9)

CIAO MAINE

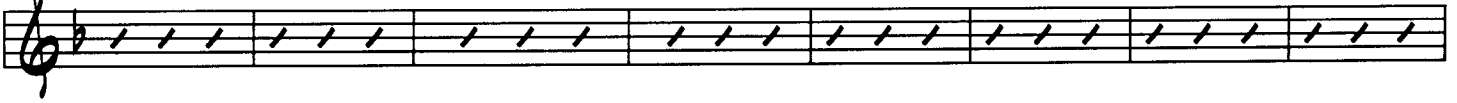
E7(b9)



C-



39



F7(b9)



Bb



A-7(b5)



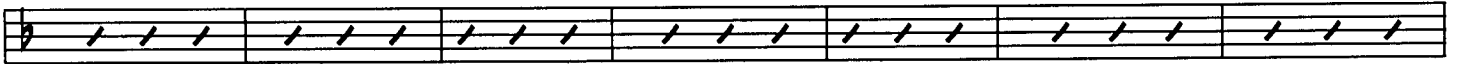
D-7(b5)



G-



47



E-7(b5)



A7



D-



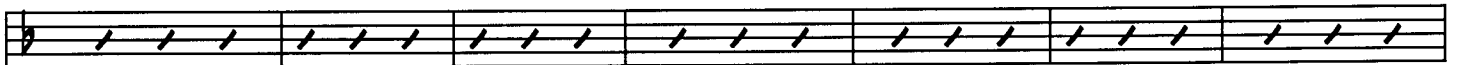
D-(+7)



D-7



54



D-6



G-



G-(+7)



G-7



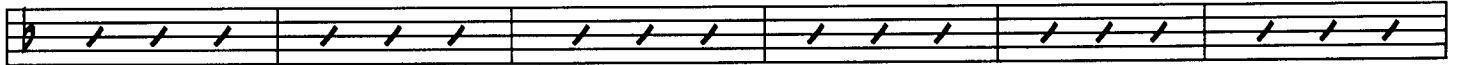
G-6



E-7(b5)



61



A7(b9)



D-



G-6



E-7(b5)



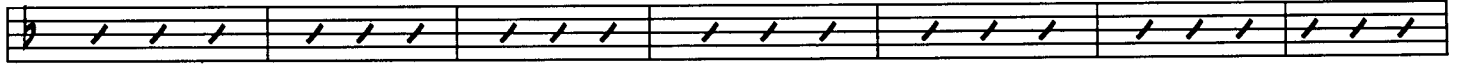
A7



D-



67



E-7(b5)



A7



D-



G-6



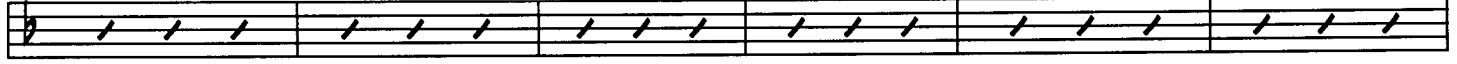
E-7(b5)



A7



74



D-



80

